

ALPHA



ALPHA



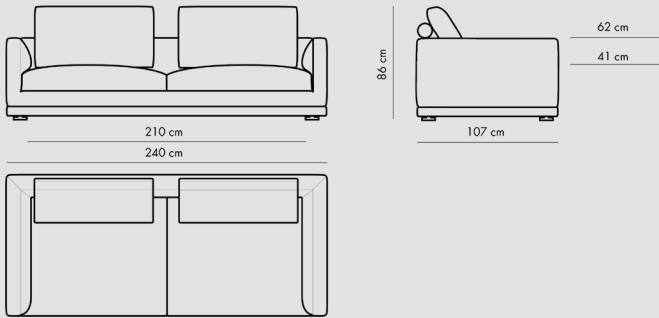
Embrace the classical elegance of the Alpha sofa, a paragon of design where traditional comfort meets modern versatility. With its clean lines and timeless appeal, ALPHA is a true classic, offering an array of configurations to suit any home. Optional end tables integrate seamlessly, providing a convenient surface for your essentials, and further extending its functionality

designer : Florent Coirier

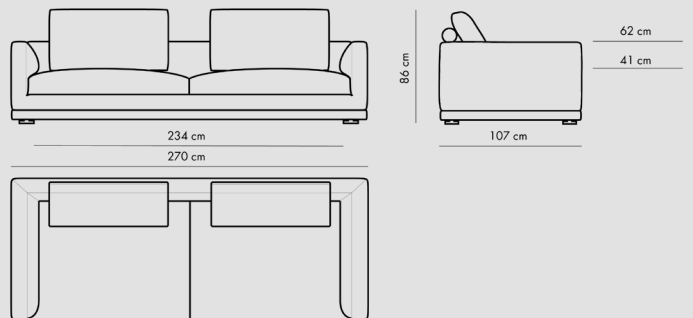


dimensions

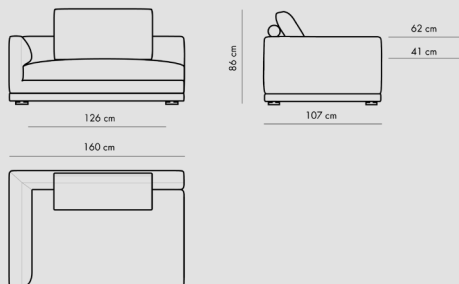
**ALPHA SOFA 2 SEATER /
COD ALP3P**



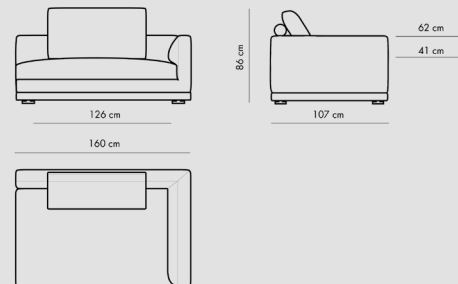
**ALPHA SOFA 3 SEATER LARGE /
COD ALP3PL**



**ALPHA SOFA DX /
COD ALPDX**



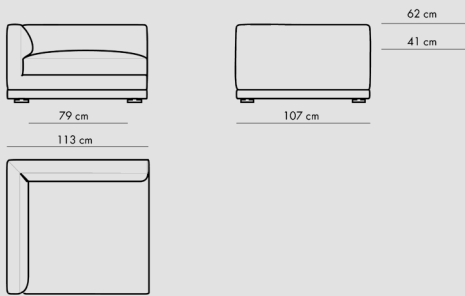
**ALPHA SOFA SX /
COD ALPSX**



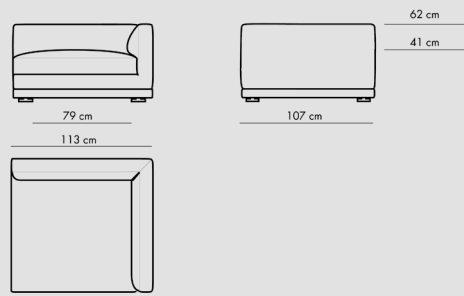


dimensions

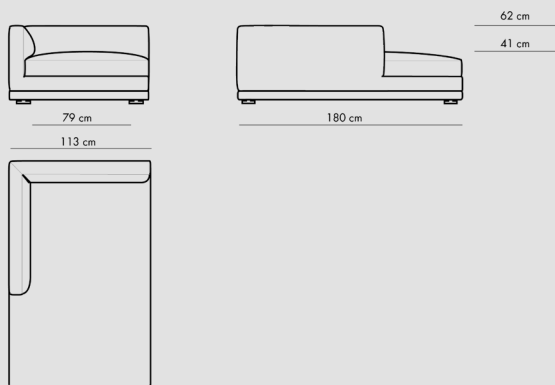
**ALPHA CORNER DX /
COD ALPCORDX**



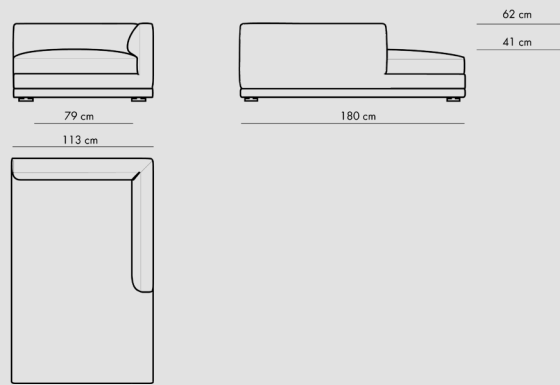
**ALPHA CORNER SX /
COD ALPCORSX**



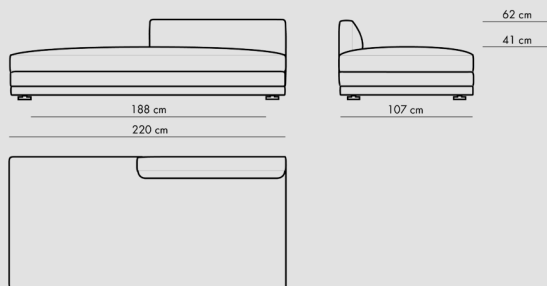
**ALPHA LOUNGE DX /
COD ALPLOUDX**



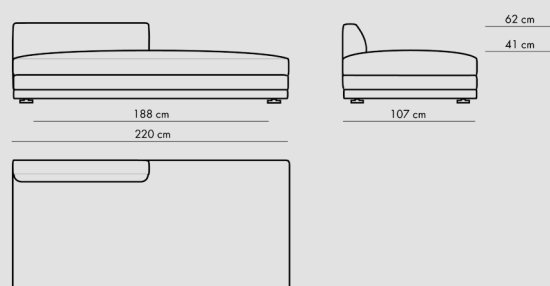
**ALPHA LOUNGE SX /
COD ALPLOUSX**



**ALPHA CX DX /
COD ALPOCXDX**



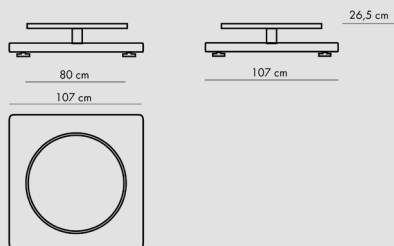
**ALPHA CX SX /
COD ALPOCXSX**



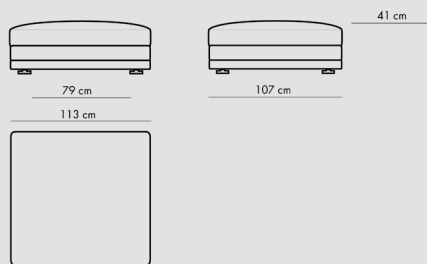


dimensions

**ALPHA TABLE /
COD ALPTAB**



**ALPHA POUF /
COD ALPPOUF**





technical informations

Internal frame:

Wooden frame

Internal composition:

Upholstery Polyurethane foam, shaped polyurethane, polyester fibre cover

Seat cushion:

Upholstery shaped polyurethane, cotton cover

Back cushion upholstery:

Cotton cover

Lower edge:

Metal feet

Cover:

Fabric or leather



colors and finitions

Chelio

Composition: 43% PL - 57% recycled CO

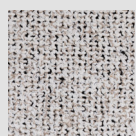
Weight Gr. /Mtl: 1.010

LightFastness: 5/6 (ISO 105-B02)

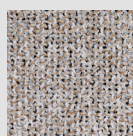
Pilling: 3/4 5.000 rubs (ISO 12945-2)

Martindale: 80.000 rubs

Firestest: Cal TB 117, BS 8552 Cigarette e Match



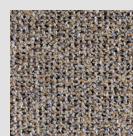
Color 02



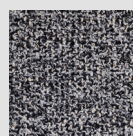
Color 03



Color 04



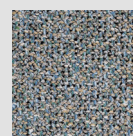
Color 05



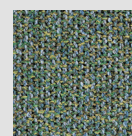
Color 06



Color 07



Color 08



Color 9

Domanico

Composition: 20% LI - 41% VI - 14% PL - 27% recycled CO

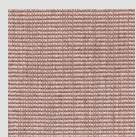
Weight Gr. /Mtl: 710

LightFastness: 5/6 (ISO 105-B02)

Pilling: 3/4 5.000 rubs (ISO 12945-2)

Martindale: 35.000 rubs

Firestest: Cal TB 117, BS 8552 Cigarette e Match



Color 07



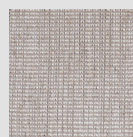
Color 12



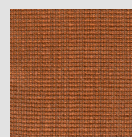
Color 04



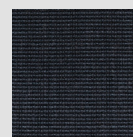
Color 21



Color 23



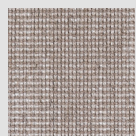
Color 24



Color 35



Color 38



Color 47



Color 52



Color 54



colors and finitions

Lucinasco

Composition: 48% PL - 15% CO - 21% PC - 11% VI - 5% LI

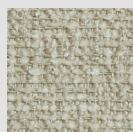
Weight Gr. /Mtl: 1.020

LightFastness: 5/6 (ISO 105-B02)

Pilling: 4/5 5.000 rubs (ISO 12945-2)

Martindale: 50.000 rubs

Firestest: Cal TB 117, BS 8552 Cigarette e Match



Color 02



Color 03



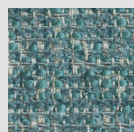
Color 04



Color 05



Color 08



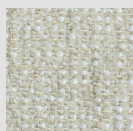
Color 12



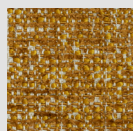
Color 17



Color 19



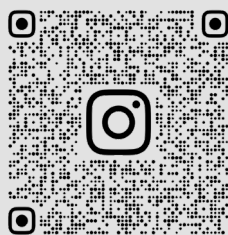
Color 20



Color 22



Color 25



expandia_official

ESPANDIA